

Product Spotlight

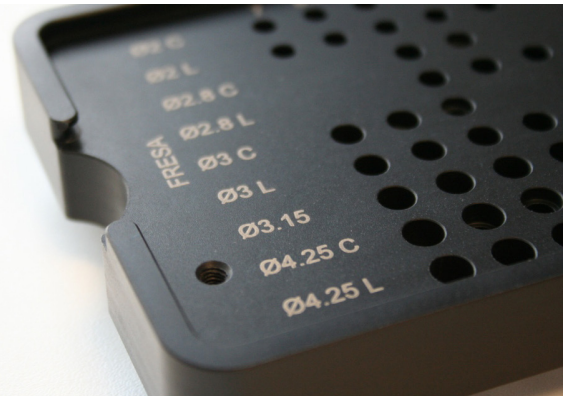
PROPYLUX[®] HS2

The preferred heat stabilized polypropylene sheet for surgical trays and caddies



PROPYLUX[®] HS2

Westlake Plastics has been producing compression molded Propylux HS2 for over 20 years. Our molding and heat stabilization expertise produces sheets with exceptional dimensional stability. If predictable supply and stable pricing are important to you, go with the "original" medical grade PP sheet. Propylux HS2 is a proven performer.



KEY FEATURES

- Compression Molded Sheet ISO 10993-5 Compliant
- Lot Controlled and Traceable
- Laser Markable
- Superior Dimensional Stability
- Low Moisture Absorption
- Excellent Chemical and Hydrolysis Resistance
- Steam, ETO and Cold Sterilizable

PRODUCT RANGE

Thickness: ½ in - 2½ in (plus tolerance)

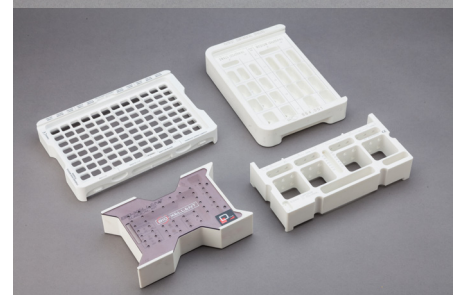
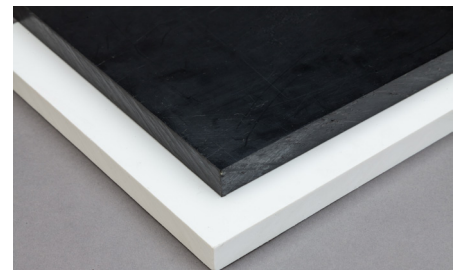
Custom Thicknesses Available

Natural Sheets Also Available

Sheet Sizes:

- 40 in. x 48 in (½ in - 1 ½ in thick)
- 24 in x 48 in (2 in - 2 ½ in thick)
- 49 in x 121 in (uncut)

COLORS AVAILABLE



Product Spotlight

PROPYLUX[®] HS2

The preferred heat stabilized polypropylene sheet for surgical trays and caddies



Westlake
plastics
LIFE IN POLYMERS

TYPICAL PROPERTIES

PROPERTY	TEST STANDARD	ENGLISH UNITS	METRIC UNITS
MECHANICAL			
Flexural Modulus	D790	259 kpsi	1,786.00 MPa
Flexural Strength	D790	7.4 kpsi	51.00 MPa
HDT @ 64 psi	D648	205 °F	96 °C
Izod Impact, notched	D256	1.60 ft-lb/in	85.00 J/m
Izod Impact, un-notched	D256	22.00 ft-lb/in	1,174 J/m
Specific Gravity	D792	0.90	0.90
Tensile Elongation @ Break	D638	19.00%	19.00%
Tensile Elongation @ Yield	D638	7.00%	7.00%
Tensile Strength @ Break	D638	4.4 kpsi	31 MPa
Tensile Strength @ Yield	D638	5.1 kpsi	Flexural Modulus

SHEET SIZING

COMPRESSION SHEET SIZING

24" x 48"	1.75" (44.45mm) 2.0" (50.8mm) 2.25" (57.15mm) 2.5" (63.5mm) 2.75" (69.85mm) 3.0" (76.2mm)
40" x 48"	0.5" (12.7mm) 0.75" (19.05mm) 1.0" (25.4mm) 1.25" (31.75mm) 1.5" (38.1mm)
120" x 48"	0.5" (12.7mm) 0.75" (19.05mm) 1" (25.4mm) 1.25" (31.75mm) 1.50" (38.1mm) 1.75" (44.45mm) 2" (50.8mm) 2.25" (57.15mm) 2.50" (63.5mm) 2.75" (69.85mm) 3" (76.2mm)

NA HEADQUARTERS
PHONE
 + 1.610.459.1000
 + 1.800.999.1700
EMAIL
 orders@westlakeplastics.com

EU HEADQUARTERS
PHONE
 + 33 (0)3 20 68 30 35
EMAIL
 contact@wp-europe.com

ASIAN SALES
PHONE
 + 86 15206218357
EMAIL
 orders@westlakeplastics.com.cn



Disclaimer* SMITHERS Quality Assessment certifications ISO 9001:2015 And ISO 13485:2016 apply to Westlake Plastics NA operations. BSI Quality Management certifications ISO 9001 and ISO 13485 apply to Westlake Plastics EU operations.

WEBSITE: westlakeplastics.com

DOCUMENT NAME: WPC_Literature_ProductSpotlightPropyluxHS2_BROC-0008 REVISION: 001 | Jan 24, 2024